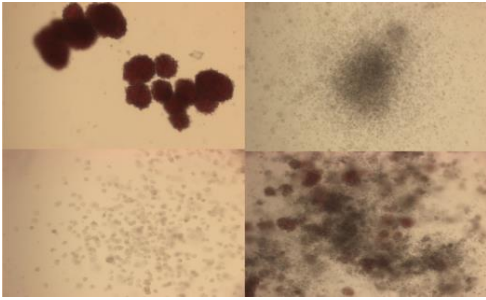


HUMAN PRIMARY CELLS

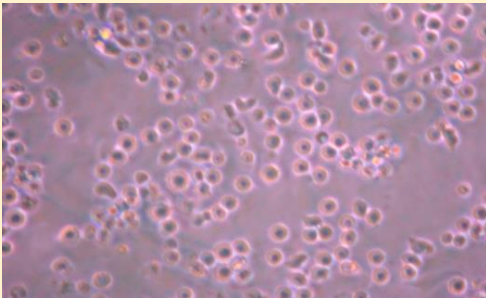
Hematopoietic Cells

CD34+



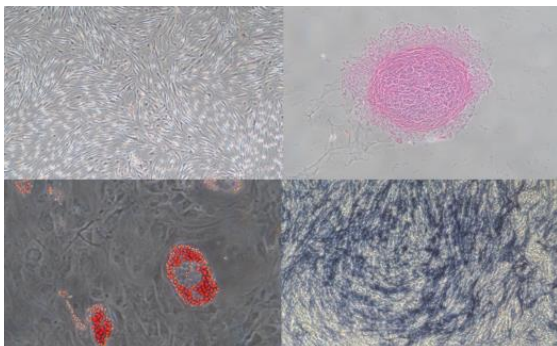
- Origin: Cord Blood
- Purity level > 95%
- Passage 0
- Single/ Pooled donor(s)
- Guaranteed amount of cells (200k-400k U)
- HLA genotyping on request
- Negative Selection available

CD133+



- Origin: Cord Blood
- Purity level > 95%
- Passage 0
- Single/ Pooled donor(s)
- Guaranteed amount of cells (200k-400k U)
- HLA genotyping on request
- Negative Selection available

Human Mesenchymal Stem Cells (hMSC)



- Origin: Bone Marrow-Umbilical Cord-Placenta
- Low Passage: close to stemcellness
- Passage 0
- Single donor
- Guaranteed 500,000 cells at passage 3 after thawing
- Negative for HIV-1/2 , Hep B, Hep C
- Validation at 3 differentiation path (A,O,C)
- Passage 3 Phenotypical (CD31, CD144 , KDR and vWF)

Authorized Distributor:



Wan Care Scientific Sdn. Bhd. (1214556-D)

G-11, Jalan Puteri 4/8, Bandar Puteri, 47100 Puchong, Selangor, Malaysia.

Contact us for more information!

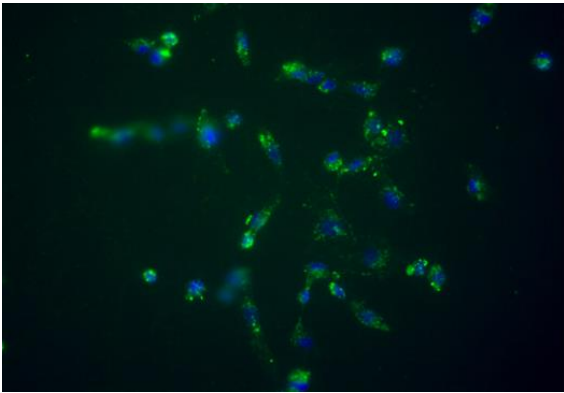
Mr Wan 012-678 9211 | wan.wancare@gmail.com

Ms Emily 019-276 6638 | emily.wancare@gmail.com

HUMAN PRIMARY CELLS

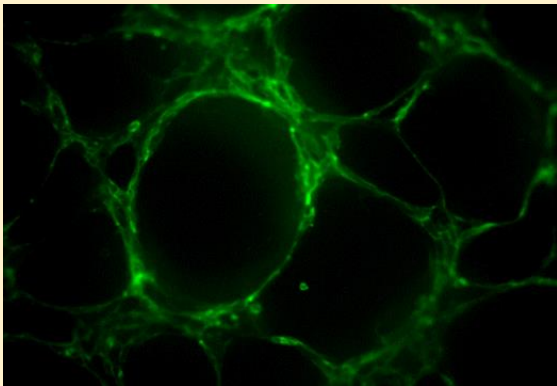
HUVEC/HUAEC/ EPC Cells Cells

HUVEC/ HUAEC



- **HUVEC:** Human Umbilical Vein Endothelial Cells
- **HUAEC:** Human Umbilical Aortic Endothelial Cells
- Origin: Umbilical Cord
- Passage 0
- Single donor
- Guaranteed 500,000 cells at passage 3 after thawing
- Negative for HIV-1/2 , Hep B, Hep C
- Passage 3 Phenotypical (CD31, CD144 , KDR and vWF)

EPC



- **EPC:** Endothelial Progenitor Cells
- Origin: Umbilical Cord Blood
- Passage 0
- Single donor
- Guaranteed 500,000 cells at passage 3 after thawing
- Negative for HIV-1/2 , Hep B, Hep C
- Passage 3 Phenotypical (CD31, CD144 , KDR and vWF)
- Naive Cells
- Higher proliferation capacity
- Stable in culture

Authorized Distributor:



Wan Care Scientific Sdn. Bhd. (1214556-D)

G-11, Jalan Puteri 4/8, Bandar Puteri, 47100 Puchong, Selangor, Malaysia.

Contact us for more information!

Mr Wan 012-678 9211 | wan.wancare@gmail.com

Ms Emily 019-276 6638 | emily.wancare@gmail.com